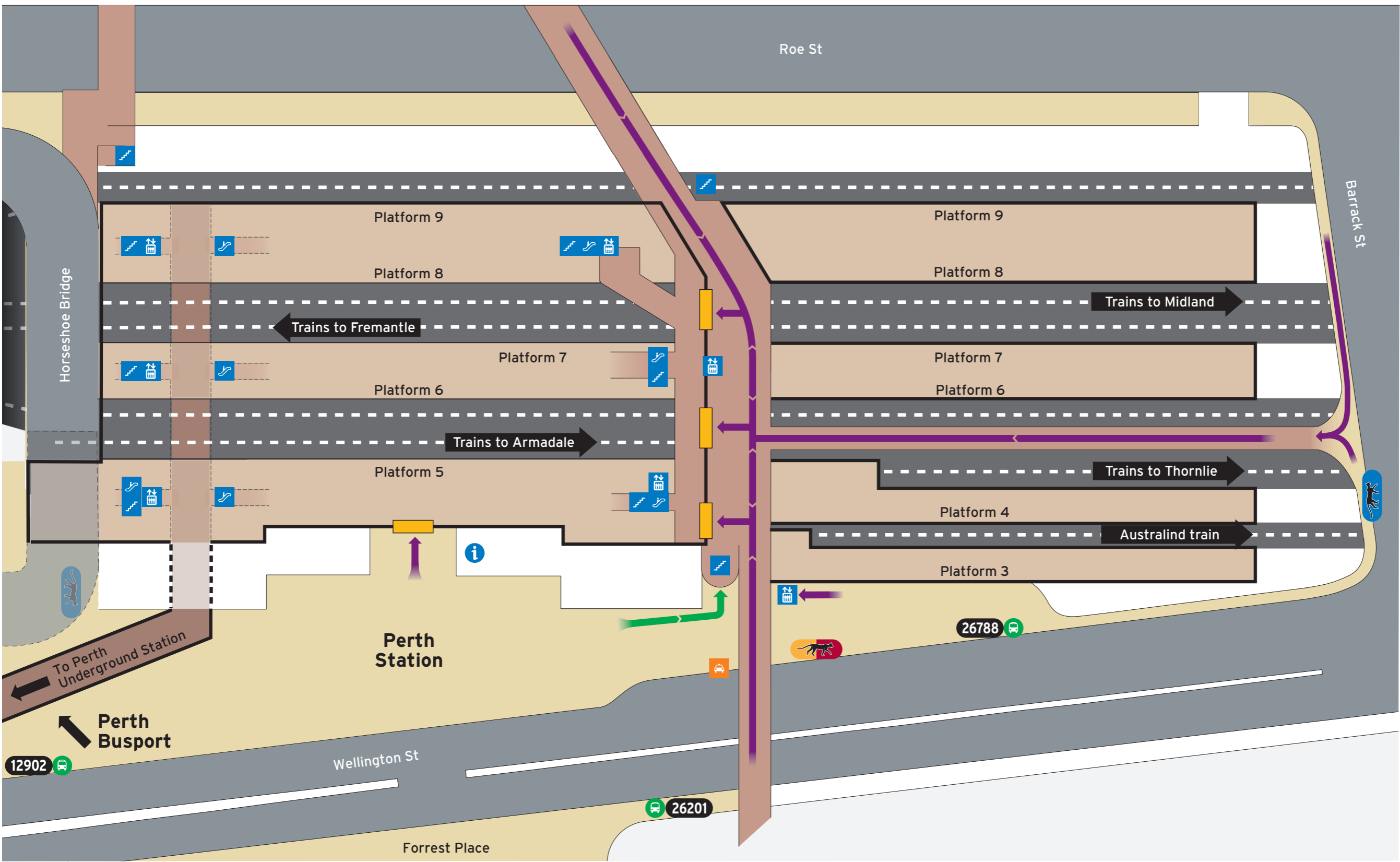


Perth Station - Access Map

Current as at 01/05/2017



Bus Stands

- | Stand | Route |
|-------|----------------|
| | Yellow/Red CAT |
| | Blue CAT |

- 12902**
- 41 to Bayswater
 - 42 to Maylands
 - 48, 60, 66, 950 to Morley Bus Stn
 - 55 to Bassendean
 - 67, 68 to Mirrabooka Bus Stn

- 26201**
- 16, 220 to Perth Busport
 - 41, 42, 48, 55, 60, 66, 67, 68 to Elizabeth Quay Bus Station
 - 950 to QEII Medical Centre
 - 960 to Mirrabooka Bus Stn

- 26788**
- 16 to Dianella
 - 220 to Armadale Stn
 - 960 to Curtin University Bus Stn

Train Replacement Stop at PERTH BUSPORT

Legend

			All access		Pedestrian access		Lift		Taxi		Pathways		Ramp & Concourse		Non-Accessible Area
North Point	Scale		Accessible pathway		Station zone		Escalator		Transperth InfoCentre		Platform		Walkway to Perth Underground		
			Ticket Barrier				Stairs		Bus Stand		Road				