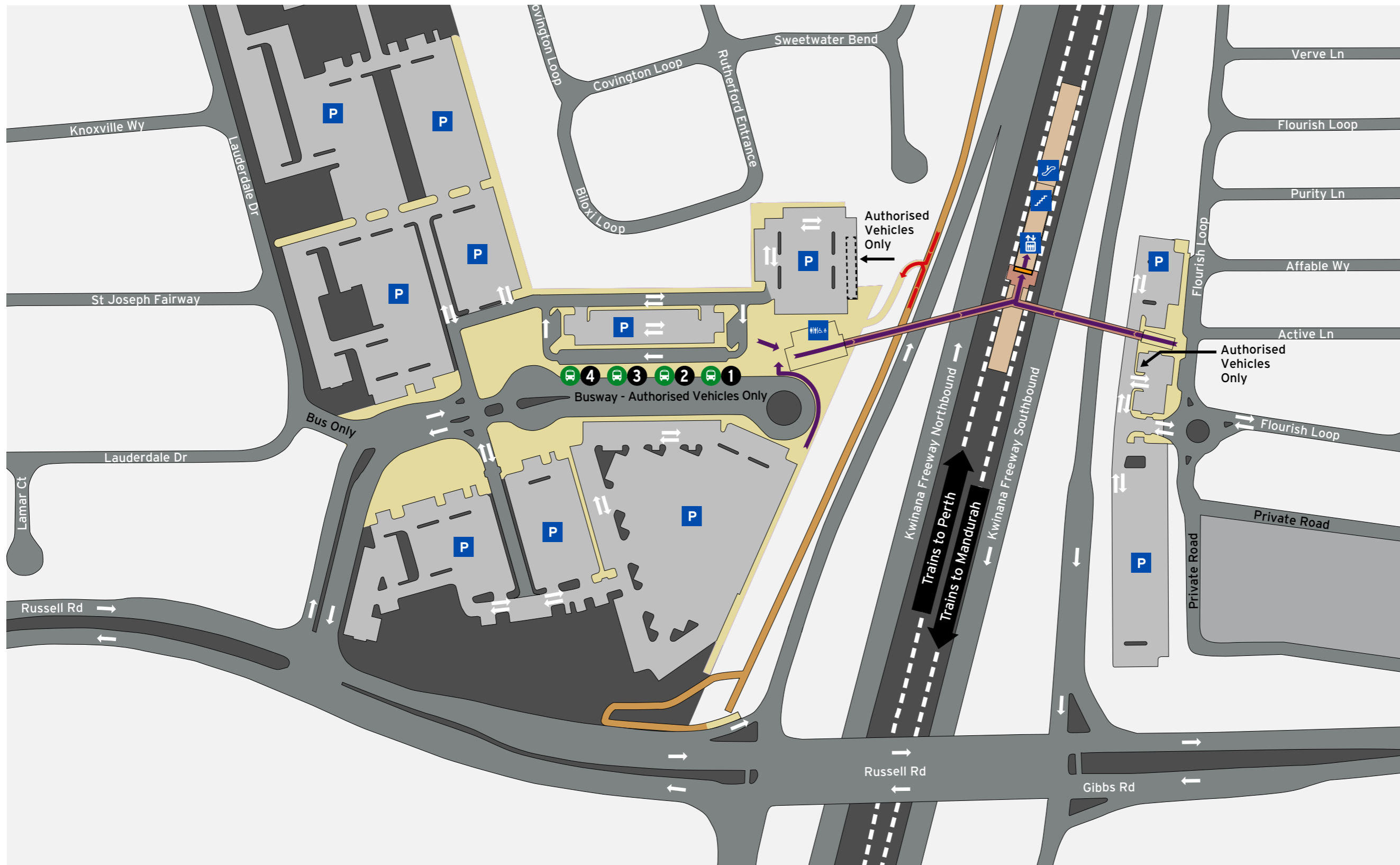


# Aubin Grove Station - Access Map 1 of 2 Current as at 13/08/2023



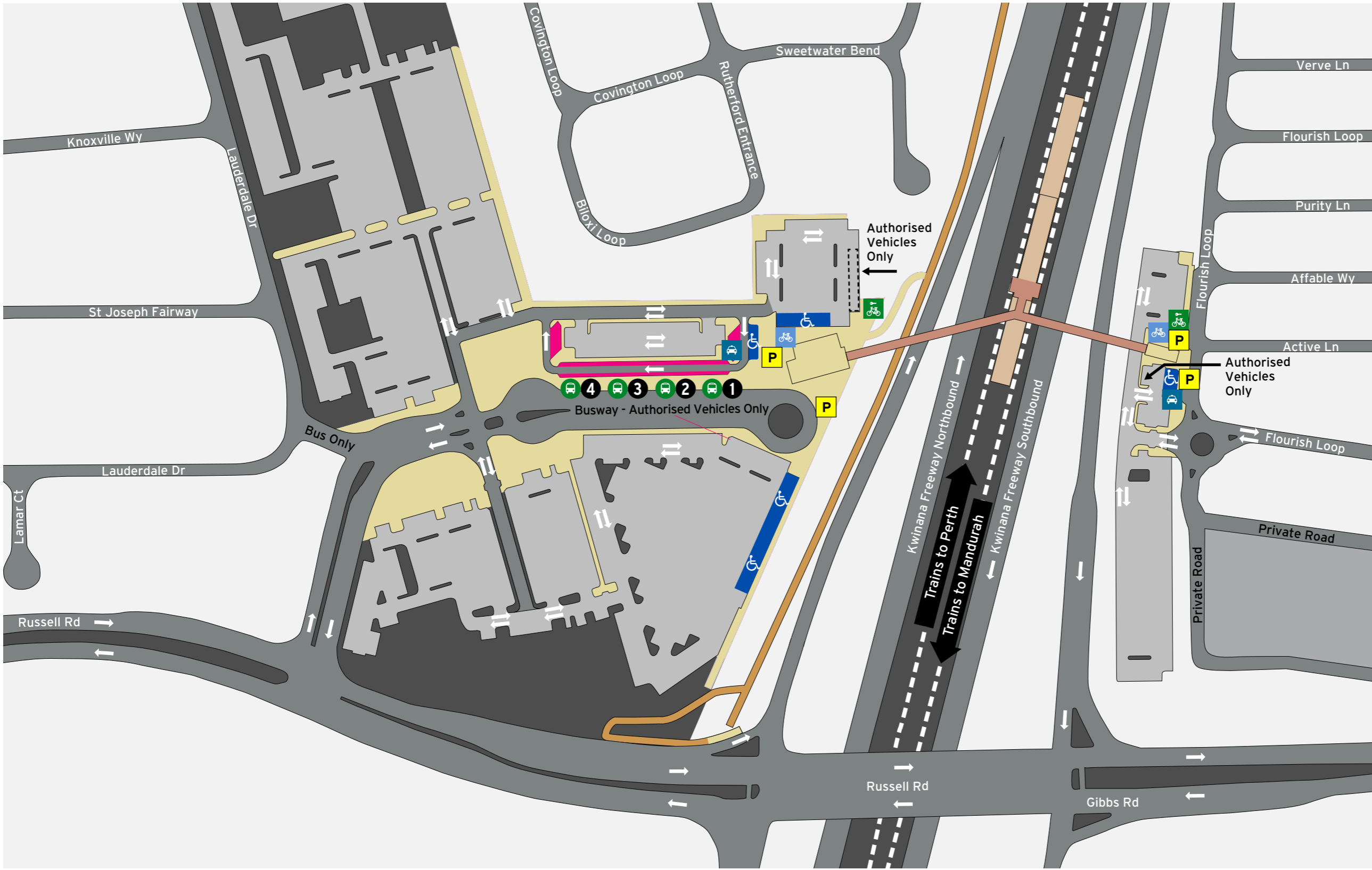
### Bus Stands

| Stand | Route   |
|-------|---|
| 1     | 534, 535, 536   |
| 2     | 537<br>Train Replacement to Perth 949 Express*          |
| 3     | 525, 526<br>Train Replacement to Perth 909 All Stations |
| 4     | 527<br>Train Replacement to Mandurah 909 All Stations   |

\*operates during scheduled track work only

## Legend

|             |       |  |  |  |  |  |  |  |
|-------------|-------|--|--|--|--|--|--|--|
|             |       |  |  |  |  |  |  |  |
| North Point | Scale |  |  |  |  |  |  |  |
|             |       |  |  |  |  |  |  |  |



**P | Parking Information**

**When to pay**

**Operating Times**  
 Monday-Friday Fee applies  
 Saturday No charge  
 Sunday or Public Holiday No charge\*  
 \*Unless vehicle is parked overnight

\$2.00 per 24hr period or part there of applies.

This parking charge applies to all vehicles.

For more information on parking your vehicle visit [transperth.wa.gov.au](http://transperth.wa.gov.au)

**Legend**

|             |       |              |           |                    |                     |           |                       |                     |
|-------------|-------|--------------|-----------|--------------------|---------------------|-----------|-----------------------|---------------------|
|             |       | Bike Shelter | Bus Stand | ACROD Parking      | Transperth Parking  | Pathways  | Concourse & Ramp      | Road                |
| North Point | Scale | Bike U-rails | Taxi      | Short Term Parking | SmartParker Machine | Platforms | Principal Shared Path | Non-Accessible Area |